



eneo DPR-2016/500D  
High-end digital recorder  
with pentaplex operation

## High-end recorder with pentaplex operation

The DPR-2016/500D with 16 loop-through channels is the new top model among eneo digital recorders – and its numerous functions target it at professional users. Running on Linux, the recorder delivers high system security and flexibility, and it is also very easy to use. Pentaplex operation allows simultaneous real-time display, recording, playback, backup and remote network access without any loss of performance.

The DPR-2016/500D uses highly efficient MPEG-4 compression and delivers maximum recording speeds of 400 fields per second (PAL). Monitor display is at 25 fields per second (per camera) in real time, and the maximum resolution for display and recording is 720x576 pixels. Playback has a choice of 4-, 3+4-, 9-, 2+8-, 1+12 and 16-channel split views. Automatic multiscreen and alarm notification display are also programmable.

The DPR has a VGA port for PC monitor connection, plus four spot monitor outputs and 16 audio inputs. 12 alarm outputs are available as TTL Open Collector, 4 alarm outputs as relay contacts. Secondary external data storage and RAID systems can be connected via the SCSI ports. A DVD-RW writer is integrated for fast data backup.

Furthermore, the ATM/POS link allows, for instance, integration of POS systems of ID card checking. Extensive search functions by date, event, text and motion or also the so-called "Museum-Search" turn video data retrieval into child's play. The recorder is secured against unauthorised operation by comprehensive security functions such as key lock and the capability to create up to 64 user

groups with individual access rights.

A programmable grid screen allows five sensitivity levels to be assigned to the integral motion detector: an alarm is triggered if an object such as luggage is left in a defined area; alternatively, the detector can of course be configured so that an alarm is triggered when an object goes missing, such as a painting in a museum. The hard disk capacity of 500GByte can be upgraded by a total of four removable hard disk drives; the disks are hot swappable in the HDD front slide-in module, i.e. they can be changed in running operation. The DPR-2016 features further include, for instance: standard hard-disk mirroring, three USB 2.0 ports, 2x to 4x digital zoom, two RS-485 interfaces for telemetry control or remote keyboard control, two RS-232 interfaces and Ethernet interface. Operation is user-friendly with jog shuttle.

Any standard software can access the recorder which, of course, is also shipped bundled with the RASplus Software. This powerful software can be configured with up to 64 user-defined surfaces, can integrate site plans for major building complexes, and it can also check alarm events displayed by fire, intrusion or motion detectors ("Pager Event Notification"). A user-friendly screen, easy-to-use search modes for fast image access and the calendar function for flexible preprogramming of recording times round off the whole package.

### Accessories

| Art.-No. | Type       | Description  |
|----------|------------|--|
| 71950    | HDD-250J   | Hard Disk Drive 250GB for DPR-2016   |
| 71956    | HDD-500J   | Hard Disk Drive 500GB for DPR-2016   |
| 74088    | EDC-KBD1   | System Keyboard with 3-axis Joystick 12VDC/230VAC                          |
| 74092    | EDC-KBDM-3 | System Keyboard w. Joystick, 5" Monitor 12VDC/230VAC, Fastrax Protocol     |
| 71902    | DTR-MOUSE  | USB Mouse for Recorder Series DTR and DLR3                                 |
| 71975    | GSA-H10N   | CD/DVD Writer DVD+R 48x/18x, CD/DVD ROM for Built-in DLR3, DCR, DPR Series |

## DPR-2016/500D

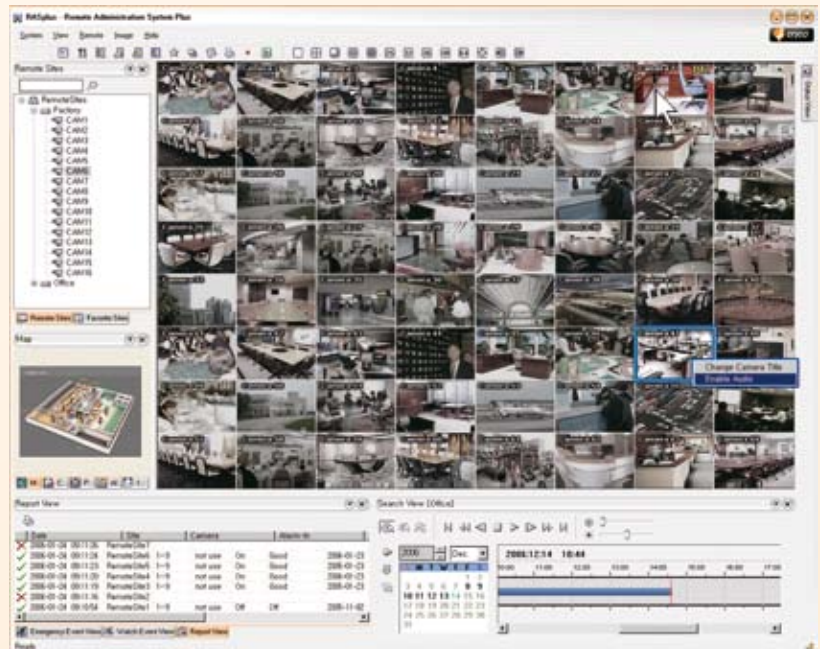
- MPEG-4 Video Compression / Pentaplex Operation
- Recording Speed 400 Fields/Sec. max.
- 4 Removable HDDs max., CD/DVD-RW Writer included
- Video Resolution 720x576 Pixels max.
- Real-Time Mirroring
- Motion Detection / Object Tracker
- 16 Loop-through Inputs / VGA, Comp., S-VHS Outputs
- Audio, Alarms and Auxiliary Inputs / Outputs
- RS-232 / RS-485 Interfaces
- Secondary Storage/Archiving via USB and SCSI Ports
- ATM/POS Text Insertion / 2x to 4x Digital Zoom
- Ethernet Connectivity / IR Remote Control



## RASplus

This powerful software facilitates a wide range of professional applications in network-based video monitoring – allowing the set-up of up to 64 user-defined areas, the integration of site layouts of large building complexes, or the checking of alarm events indicated by fire, intruder or movement sensors (“pager event notification”).

The integrated editor means that your own site maps can be created easily – so it's possible, for example, to install an existing building floor-plan and then place the installed cameras in the relevant locations with just a few mouse clicks. The camera images can then be viewed simply by clicking the mouse. In the case of an alarm, there is also an additional automatic transfer to the relevant camera image. RAS plus is controlled by drag and drop. Extensive search functions, a comfortable, intuitive user interface, improved network stability and automatic firmware updates on the recorders by a server make this software a powerful tool, allowing you to control and manage a complete video monitoring installation.



## Specifications DPR-2016/500D

|                                   |   |
|-----------------------------------|---|
| Event Logs                        | No limit for alarm-in, motion, video loss, text-in  |
| Search function                   | Date/Time, Calendar, Event, Motion, Museum, Text and Bookmark   |
| Transmission rate (Network)       | 100 Fields/sec. (CIF), 50 Fields/sec. (2CIF), PAL   |
| Alarm processing                  | Programmable automatic alarm multiscreens   |
| Text insertion interface          | ATM/POS, 10 chann. max.   |
| Monitor display                   | Real time: 25 Fields/Sec. (PAL)   |
| Zoom function                     | 2x-4x   |
| Playback                          | 1, 4-, 3+4-, 9-, 2+8-, 1+12-, 16-channel Split, PIP   |
| Pre- alarm / Post-alarm recording | Up to 30min. / Up to 15min.   |
| Serial interface                  | RS-485 for telemetry control (proved protocols: eneo-Fastrax, Pelco P/D) or remote keyboard control                           |
| Activity detection                | 24x30 grid, Sensitivity levels: 5   |
| Video inputs                      | 16x 1Vp-p, (C)VBS, 75ohms, BNC, looping inputs  |
| Monitor outputs                   | 4x Spot 1Vp-p, (C)VBS, 75ohms, BNC; 1x VGA  |
| Video output                      | 1x 1Vp-p, (C)VBS, 75ohms, BNC; 1x Y/C, Y= 1Vp-p, C= 0.3Vp-p, 75ohms   |
| Audio input / output              | 16x line-in, RCA socket / 1x line-out, RCA socket   |
| Resolution                        | CVBS/PAL: 720x576 Pixels; VGA: 720x576, 800x600px. (Display)  |
| Recording speed                   | 400 Fields/sec. at CIF/2CIF (352x288/704x288 Px.), 200 Fields/sec. at 4CIF (704x576 Px.) PAL                                  |
| Image size                        | Low: 6,7/8KB, Standard: 15/18KB, High: 30/36KB, Super High: 66,7/80KB (NTSC/PAL). Mode: „High Resolution/4CIF“                |
| Hard disk capacity                | 500GByte, up to 4 internal HDD's possible   |
| Playback speed                    | 400 Fields/sec. at CIF (336x272 Px. / PAL) and duplex   |
| Secondary Storage                 | via USB 2.0, SCSI Interface, or built-in CD/DVD-RW writer. Network Data Export: Clip Player, AVI, JPG, BMP                    |
| Alarm inputs                      | 16x TTL, programmable as NC/NO  |
| Alarm outputs                     | 12x TTL, open collector (terminal block)  |
| Alarm reset input                 | 1 TTL (terminal block)  |
| Archiving                         | With EIDE, SCSI and USB HDD's. Real-time mirroring  |
| Menu languages                    | German, English, Italian, French, Spanish   |
| Ethernet interface                | 10Base-T/100-Base-TX, RJ-45   |
| Remote Software                   | For remote administration and search function (RAS plus supplied with the unit)   |
| Interfaces                        | 3x USB, 2x RS-485, 2x RS-232 (ATM/POS, Telemetry, Remote, Configuration or Modem), 1x SCSI port for memory extension          |
| Supply voltage                    | 100VAC~230VAC, 50/60Hz  |
| Power consumption                 | Approx. 150watts  |
| Temperature range                 | 5°C ~ +40°C   |
| Dimensions (HxWxD) / Weight       | 177x430x504mm / 16kg  |
| Parts supplied                    | IR Remote control unit, 19" Rack mount kit, Mains cable, Viewer CD ROM (RAS+), Screw set and flat cable for HDD assy, Manuals |